

# Sistemi za izradu staklenih pregradnih vrata

**europrofil**

PVS UNIVERSAL sistem za izradu staklenih preg. vrata u AL ramu

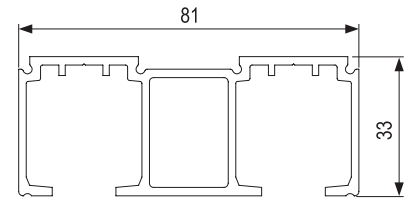
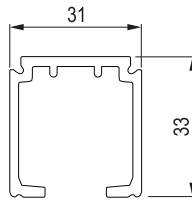
80kg	Staklo 5mm 5.5mm 6mm	770-1500 max	Meko zatvaranje
------	-------------------------------	-----------------	--------------------

PVD EVOLUTION sistemi

PVD TS-1280 gornja šina AL (PVS)

PVS UNIVERSAL gornja 2k šina AL

PVS UNIVERSAL sistem za je kompatibilan sa PVD Evolution kiznim mehanizmima:  
- [art. 7182](#)  
- [art. 7410](#)  
- [art. 9427](#)



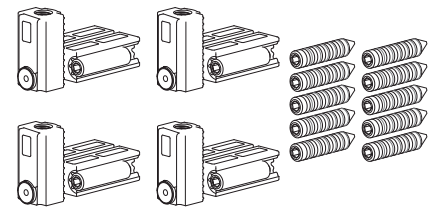
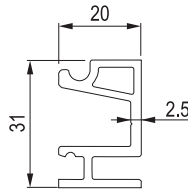
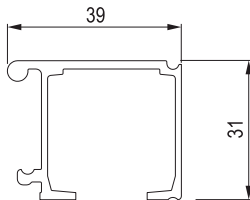
		šifra
m	SM	5748

		šifra
m	SM	7548

PVD TS-1700 gornja šina AL (PVS)

PVD TS-1700 nosač 1710 AL (PVS)

PVS UNIVERSAL veznik 4/1 ZnAL



		šifra
m	SM	5756

		šifra
m	SM	6256

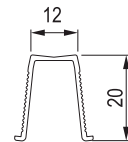
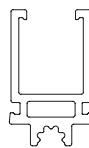
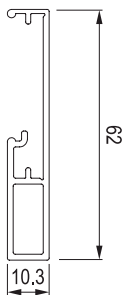
		šifra
set	ZnAl	7455

Prodajne dimenzije profila (m): 1; 1.5; 2; 3; 4; 6

PVS UNIVERSAL maska gor. šine AL

PVS UNIVERSAL nosač Evolution meh. AL

PVD PVC donja vodica TS



		šifra
m	SM	7456

		šifra
m	SM	7458

		šifra
m	siva	5764

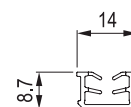
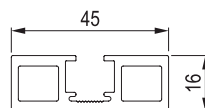
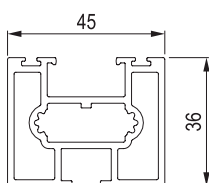
Prodajne dimenzije profila (m): 1; 1.5; 2; 3; 4; 6.

Prodajne dimenzije profila: 1m i 3m

PVS TS UNIVERSAL horiz. profil AL

PVS TS UNIVERSAL vert. profil AL

PVS TS UNIVERSAL ispuna PVC



		šifra
m	SM	7453

		šifra
m	SM	7452

		šifra
kom	siva	7454

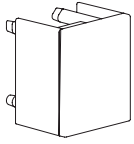
Prodajne dimenzije profila (m): 1; 1.5; 2; 3; 4; 6.

L=3m

PVS UNIVERSAL sistem za izradu staklenih preg. vrata u AL ramu

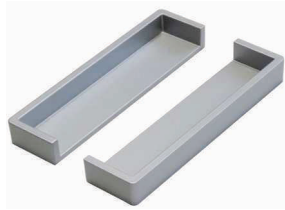
80kg	Staklo 5mm 5.5mm 6mm	770-1500 max	Meko zatvaranje
------	-------------------------------	-----------------	--------------------

PVS UNIVERSAL čep gornje šine



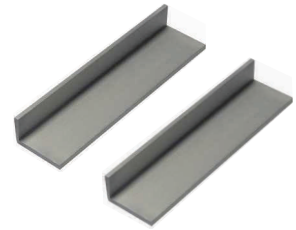
		šifra
kom	Siva	7459

PVS UNIVERSAL U ručica 140mm



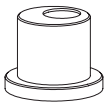
		šifra
par	SM	9665

PVS UNIVERSAL L ručica 120mm



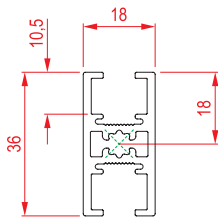
		šifra
par	SM	8923

PVS UNIVERSAL usmerivač pravca



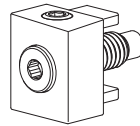
		šifra
kom	Bela	7457

PVS UNI. podeoni profil AL



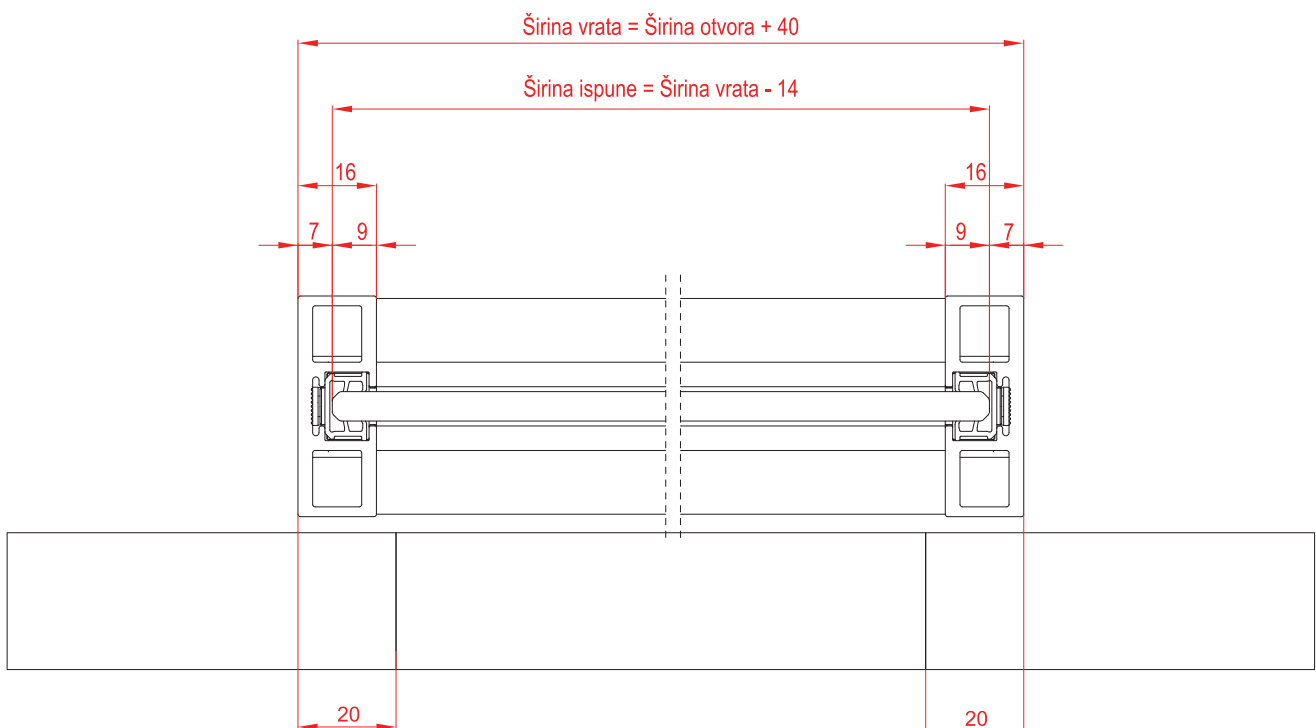
		šifra
m	SM	8921

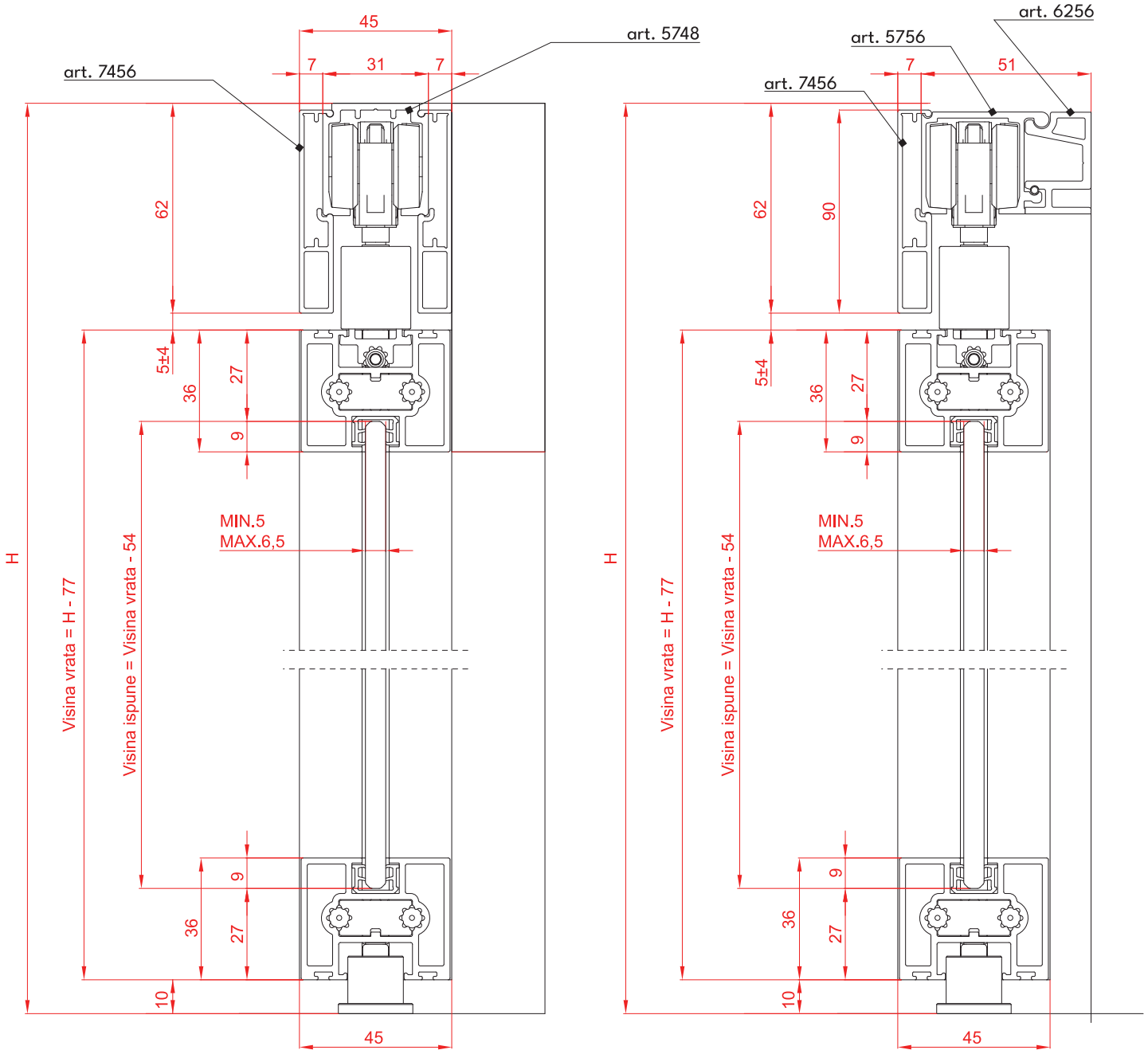
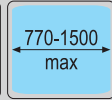
PVS UNI. veznik za pod. profil



		šifra
kom	ZnAl	8922

Tehnički crteži i prikaz montaže mehanizma





Položaj usmerivača pravca u odnosu na ivicu vrata

