

Sistemi za izradu staklenih pregradnih vrata

europrofil

Vetro 40 Drag sistem za staklena pregradna vrata

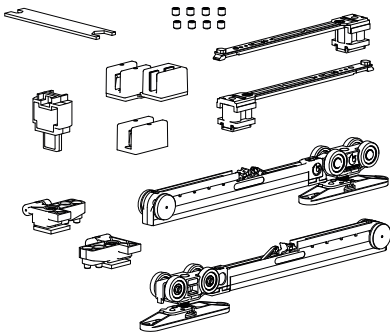
Max težina
do **80kg**
po vratima

Stakla debljine:
8,0 - 8,7mm
10,0 - 10,7mm



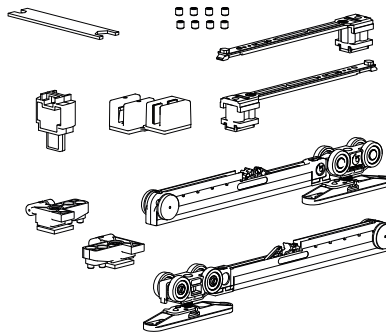
FLUID
tehnologija
usporivača

PVS V40 Drag - Vrata **A** mehanizam



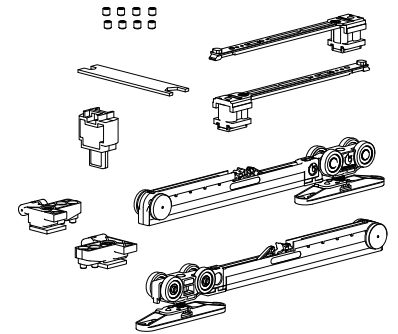
		šifra
set	metal	8738

PVS V40 Drag - Vrata **B** mehanizam



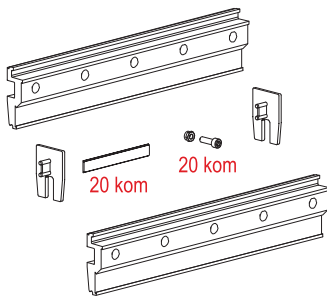
		šifra
set	metal	8739

PVS V40 Drag - Vrata **C** mehanizam



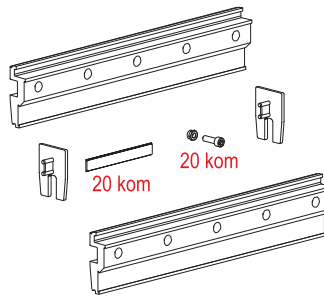
		šifra
set	metal	8740

PVS V40 nosač stakla 8mm -100cm



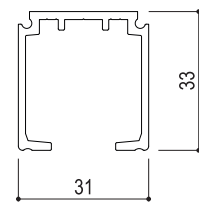
		šifra
set	●	5751

PVS V40 nosač stakla 10mm -100cm



		šifra
set	●	5752

PVD/PVS TS-1280 gornja šina AL SM



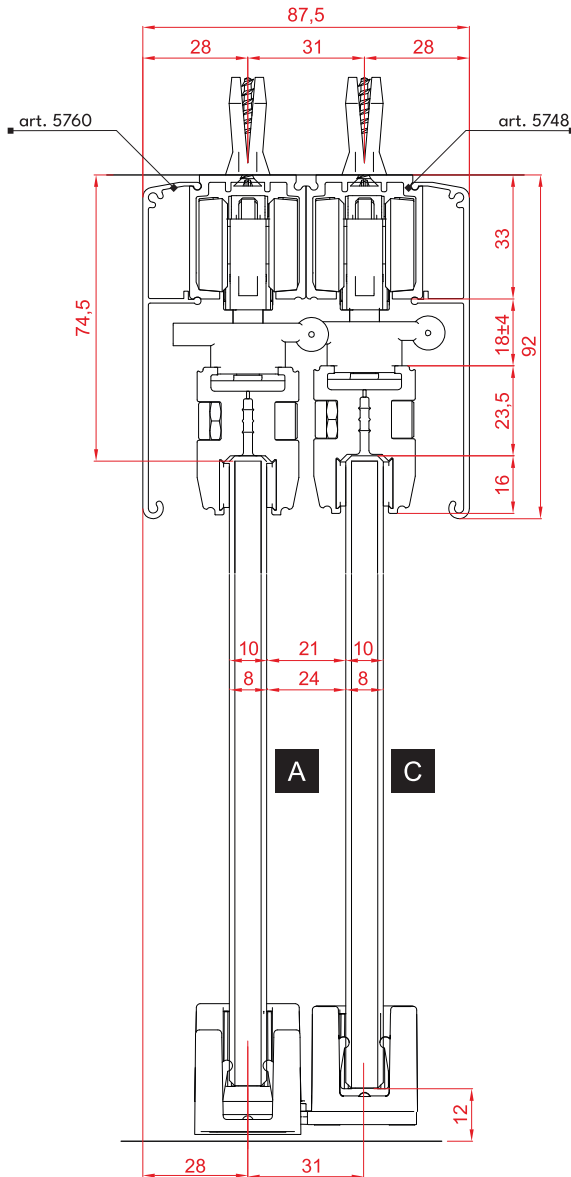
		šifra
m	●	5748
Prod.duž. :1,5m - 6m max		

PVS gornja šina 1280 L=6m AL SM

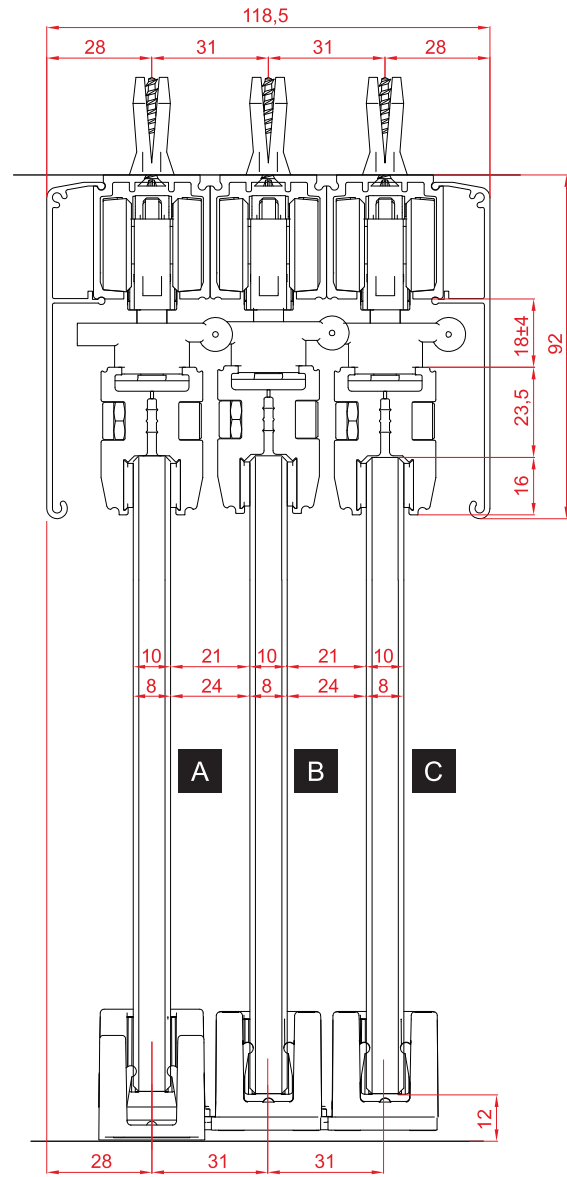


		šifra
m	●	5760
Prod.duž. :1,5m - 6m max		

Opcija za dvoje vrata (A i C mehanizam)



Opcija za troje ili više vrata (A, B i C mehanizmi)



Visina stakla = Visina otvora - 86,5

Moguće je postaviti više od troje vrata
a u tom slučaju se koriste:

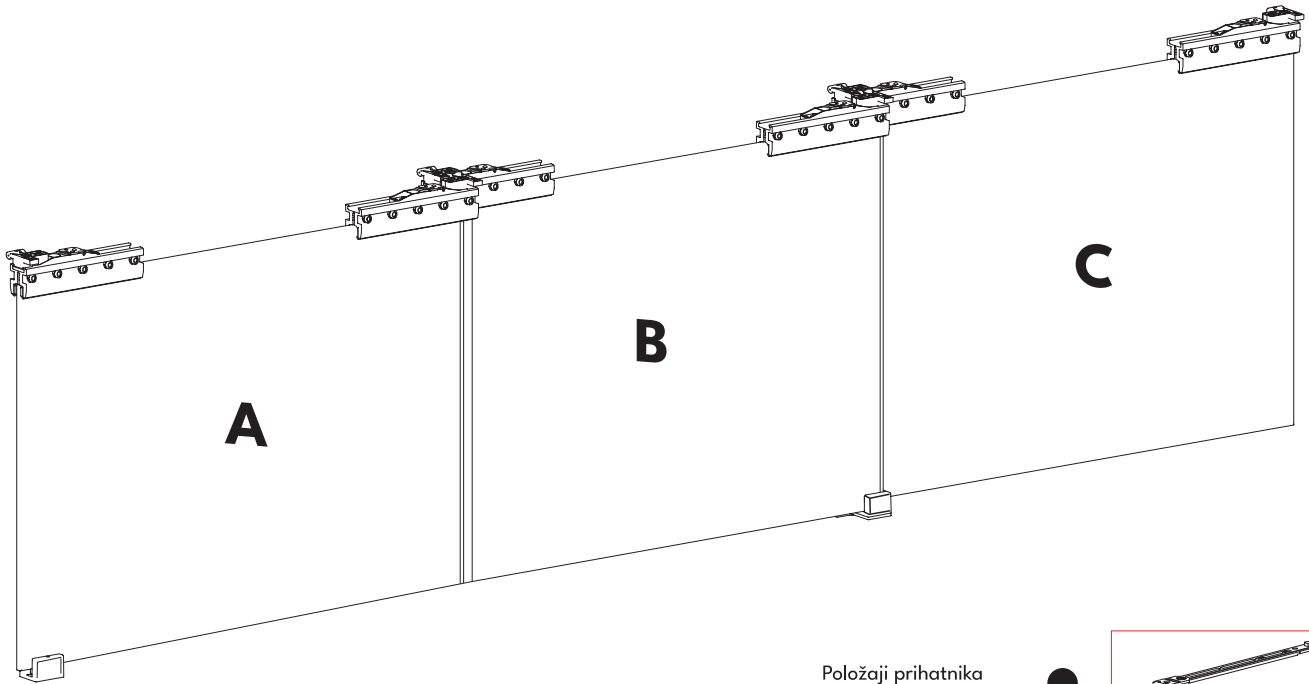
1. Mehanizam A - jedan set
2. Mehanizmi B - (X) setova
3. Mehanizam C - jedan set

Stakla debljine:
8,0 - 8,7mm
10,0 - 10,7mm

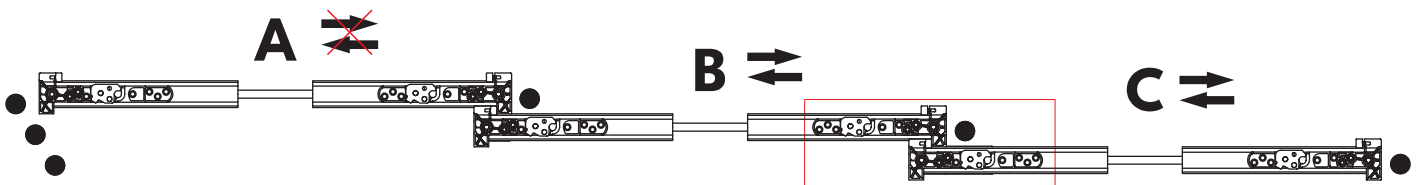
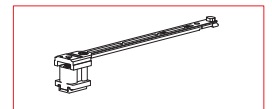
Min 700mm

FLUID
tehnologija
usporivača

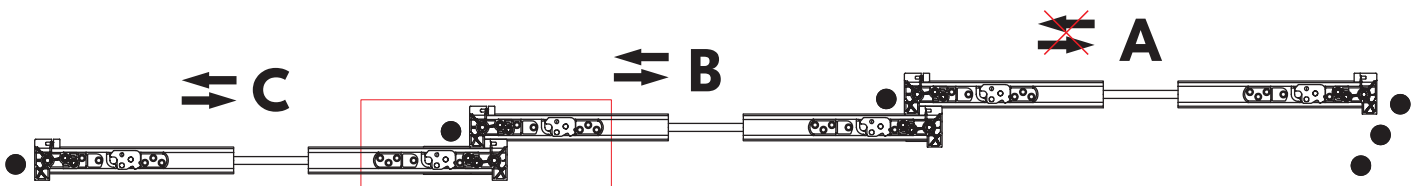
Tehnički detalji i dimenzije



Položaji prihvatnika usporivača za sva vrata





smer kretanja vrata



smer kretanja vrata



 Stakla debljine: 8,0 - 8,7mm 10,0 - 10,7mm	 Min 700mm	FLUID tehnologija usporivača
---	--	---

Tehnički detalji i dimenzije

