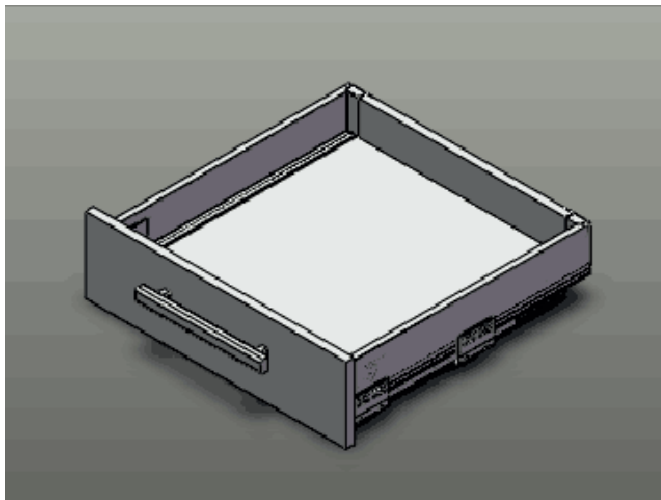
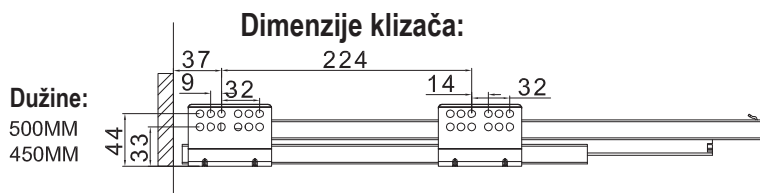
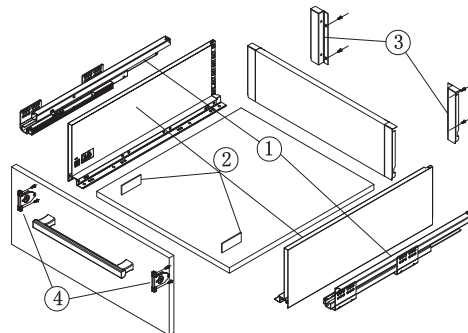


Klizači za fioke sa metalnim stranicama H=170mm



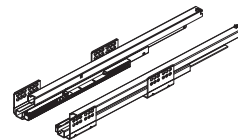
Sadržaj seta:



1. Klizači

Dostupne dužine:

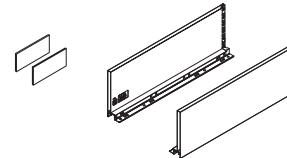
450mm
500mm



2. Stranice i čepovi

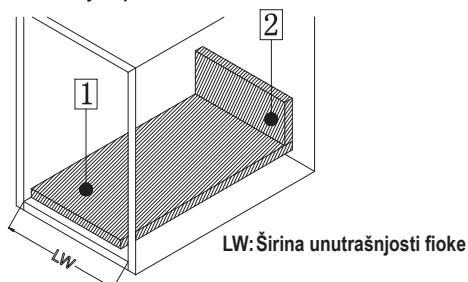
Dostupne dužine:

450mm
500mm



Dimenzije donje i zadnje stranice

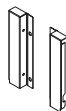
18mm debljina panela



1 Širina donje stranice = unutrašnja širina fioke -75± 0,5
Dužina donje stranice = dužina klizača - 10mm

2 Visina zadnje stranice = 151mm
Širina zadnje stranice = unutrašnja širina fioke -87± 0,5

3. Držači ledja

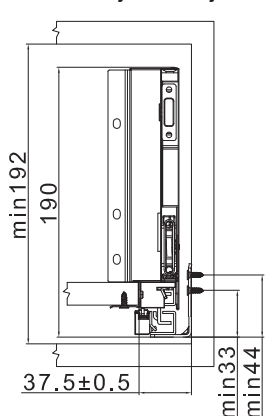


4. Držači stranice

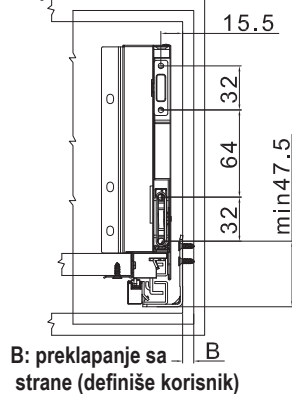


Instrukcije za montažu:

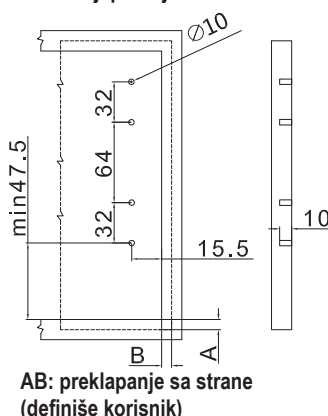
Unutrašnje dimenzije:



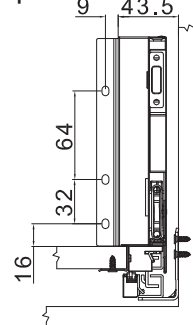
Položaji za ugradnju prednje ploče:



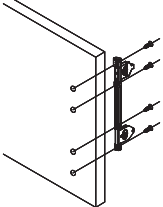
Položaji prednjih nosača:



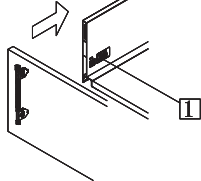
Položaji za ugradnju zadnje ploče:



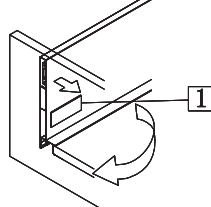
Montaža držača fronta:



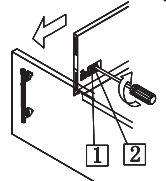
**1 Montirana fioka
Zategnite vijak za pričvršćivanje**



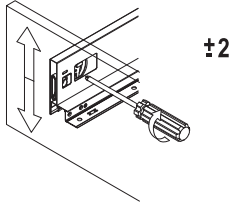
1 Izvadite plastični poklopac



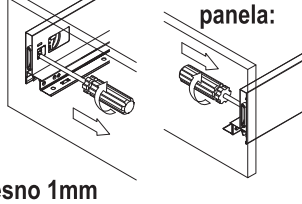
**1 Otpustite vijak
2 Rotacija za demontažu panela**



Podešavanje visine prednjeg panela:

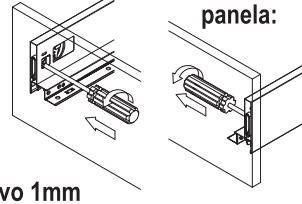


Bočno podešavanje prednjeg panela:



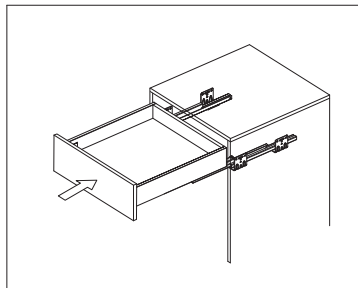
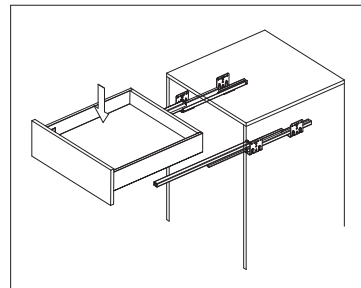
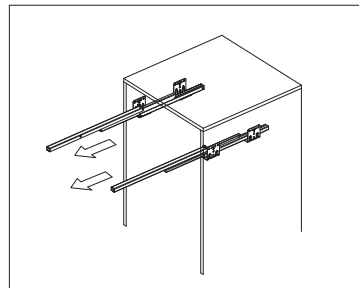
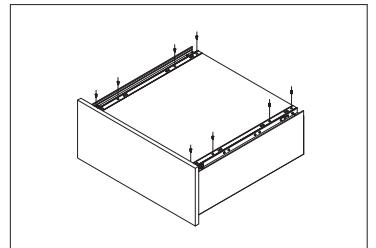
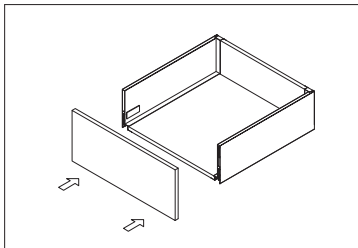
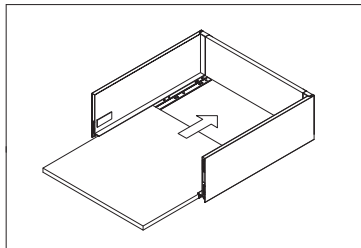
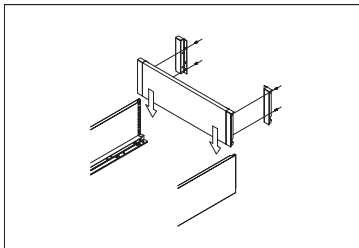
desno 1mm

Bočno podešavanje prednjeg panela:

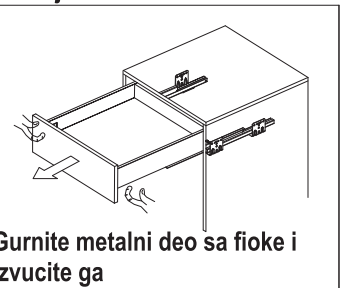


levo 1mm

Montaža klizača:



Skidanje fioke:



Gurnite metalni deo sa fioke i izvucite ga

Soft close funkcija:

